

Taking **NAV** one step further

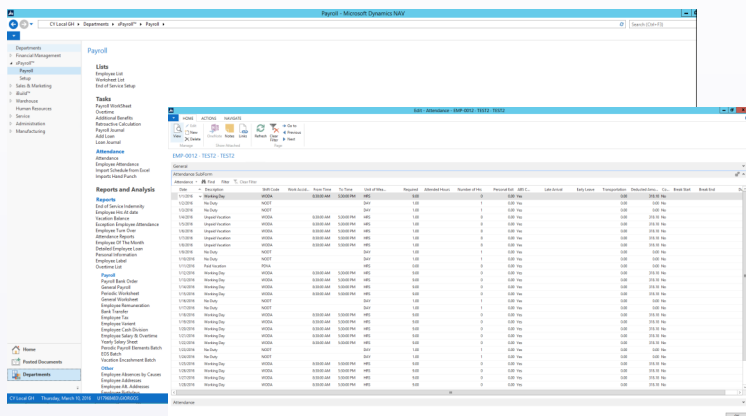
Automates Your Payroll
Compliments Your ERP
All-in-one Solution

xPayroll™ for NAV advances the ERP's features for people management, payroll calculations, and attendance administration all in one place, eliminating the need for a standalone payroll software



xPayroll™ Supports Microsoft Dynamics NAV 5.x, 2009, 2013, 2015 and 2016 Platforms

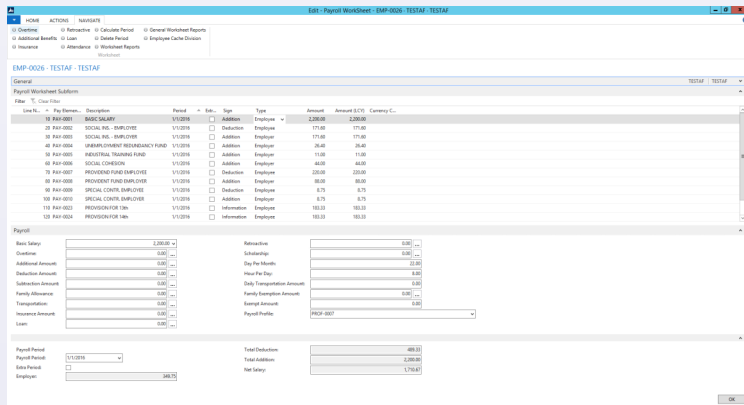
- ✓ The only Payroll and Provident Fund solution localized for Cyprus built within Microsoft Dynamics NAV
- ✓ Custom pay-slip designs
- ✓ User defined earnings, deductions, contributions
- ✓ Time Attendance Integration
- ✓ Payroll history
- ✓ Mass & Secure e-mailing of Pay Slips
- ✓ End of Service
- ✓ Fully integrated with Exelsys HCM
- ✓ Standard governmental payroll reporting
- ✓ All legal reports (IR59/IR7/IR63 etc.)



Parameterized configuration

xPayroll™ provides setup parameters that allow the monitoring of every processing step and calculation criteria, company policies for payment generation, annual leave, and even processes complicated retroactive calculations with maximum flexibility

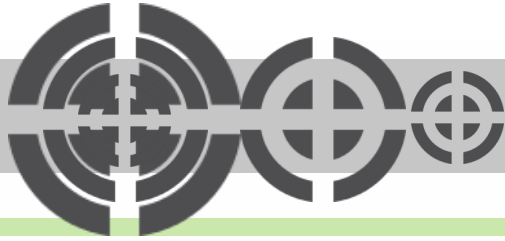
Employee Pay Slip					
Employee Name: John Roberts	Employer Name: PAYROLL	Employee Code: 2009100002	T.I.C: TIC0000123		
Employer ID No.: 2424216	Period: 01-04-16 to 30-04-16	Social Insurance No.: 389579577			
Rate: 7.55					
Absent Days/Hours:					
PAYMENTS		DEDUCTIONS		CONTRIBUTIONS	
BASIC SALARY:	1,400.00	SOCIAL INSURANCE:	109.20	SOCIAL INSURANCE:	109.20
LEAVE PAID:	0.00	PROVIDENT FUND:	0.00	PROVIDENT FUND:	0.00
EXTRA SALARY:	0.00	MEDICAL FUND:	0.00	SOCIAL CONSERV FUND:	22.00
		TAX (PAYEE):	0	MEDICAL FUND:	0.00
		SPECIAL CONTRIBUTION:	0.00	UNEMPLOYMENT FUND:	16.80
		OTHER DEDUCTIONS:	0.00	INDUSTRIAL TR. FUND:	7.00
		LOADS:	0.00	SPECIAL CONTRIBUTION:	0.00
		ADVANCE:	0.00		
		WIDOW/PENSION:	0.00		
		WELFARE FUND:	0.00		
TOTAL PAYMENTS:	1,400.00	TOTAL DEDUCTIONS:	109.20	TOTAL CONTRIBUTION:	161.00
		TOTAL EMOLUMENTS:	1,561.00	NET SALARY:	1,290.80



xPayroll™ is available On-Site and On the Cloud through SaaSPlaza and Microsoft Azure Platforms

Hosted xPayroll™ deployments, are fully encrypted and backed up. The information is hosted in world class datacenters under managed security and certified for SAS70-Type II





Basic Functionality

- Pay elements categories and posting profiles
- Employee personal information such as Addresses, Telephones, Social security information and Income tax information
- Full integration with ledgers, HR and calendar features of Microsoft Dynamics NAV, in addition to full integration with Exelsys HCM
- Synchronous update of salary and payroll information
- The add-on is built using the technical architecture of MS Dynamics NAV following Microsoft best practices, and certified for Microsoft Dynamics NAV

Employee Payroll Profiles

- Grouping
- Versioning
- Control

Vacations, Holidays, Sick Days & more

- Annual Leave Groups
- Holidays are integrated with NAV's calendar
- Sick leave setup
- Vacation Benefits
- Vacation Balance

Employee shifts and working times

- Shift codes
- Shift groups
- Attendance schedule

Loans

- Types
- Loan Scheduling
- Defer and postpone Loan Payments

Retroactivity

- Apply retroactive calculations to basic salary, transportation, family contributions, and all forms of additions and deduction amounts
- Activate and deactivate eligibility for retroactive calculation
- Run transportation retroactivity based on transportation rate changes

Localization

- Localized Payroll features for Lebanon, Iraq, UAE, KSA, Cyprus, and Qatar
- Localization for Canada will be available in Q3 2017
- Statutory compliant features per localized country; including Taxation, Social Insurance, and governmental reports such as (IR59/IR7/IR63) etc.

Pay Tax and Tax exemptions

- Tax salary brackets and exemptions definitions in direct correlation with employee's relatives' information
- Set up several pay tax elements and select the pay elements it applies to
- Set up tax exemption amounts separately for each member of the employee's relatives

Attendance Management

Payroll worksheet

Mobile Access (Available Q3 2016)